



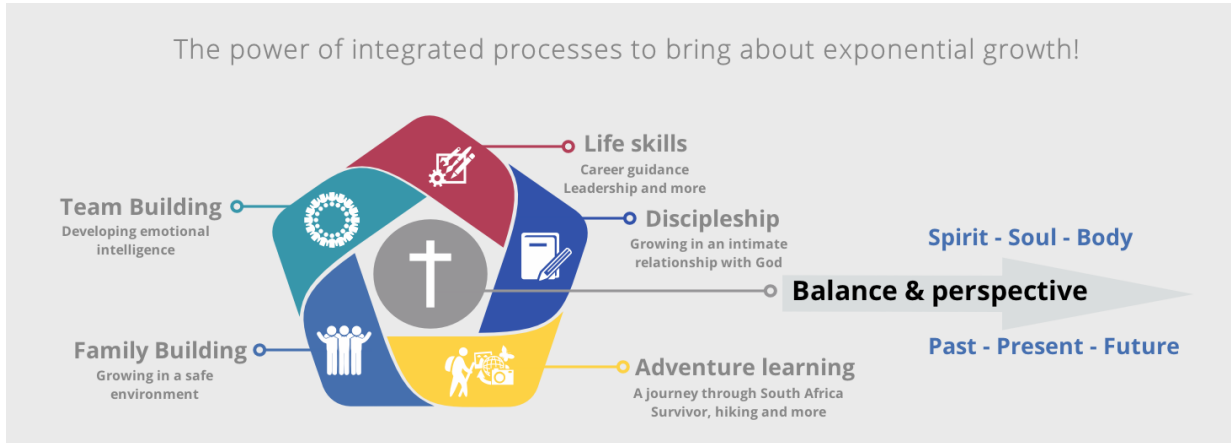
Target Life is a development **Gap Year**

Invest a year and benefit for eternity

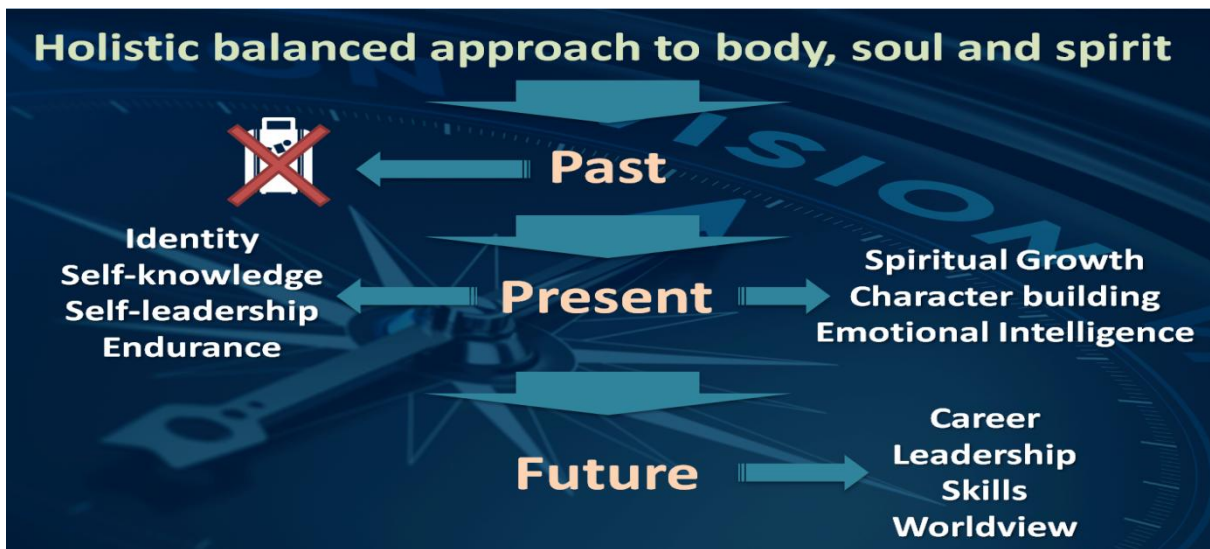
Our Goal

To equip **YOUTH** to pursue their **GODLY** purpose with passion and perseverance

5 Integrated processes



Development sequence: Foundations ⇌ Coaching ⇌ Purpose ⇌ Leadership ⇌ Worldview ⇌ Servant hood ⇌ Endurance ⇌ Relationships ⇌ Skills ⇌ Depth ⇌ Ministry Training ⇌ Balance



Expansion

20 Years' experience grew us to specialists in personal development of post school youth and continued adaptation to maintain relevance has progressed the Target Life to be multiplied It's time to invest in South Africa's future by investing in future leaders in a new way

“Invest a year and benefit for eternity!”

Reality Check

Up to 60% first year drop out at tertiary institutions

Up to 5 years additional HR training /development to make Millennials functional in the workplace

Development Year - From luxury to necessity

A development Gap Year can ignite balance, self leadership, purpose and vision that will ensure greater responsibility, attitude, development and success during studies years and more direct functionality in the workplace. A Better Long-term solution.

Need for student bursaries

There are great young people out there with amazing potential, but held back because of broken families, past hurts and a lack of finance where often a single mother has to provide. A bursary to do Target Life can give them the opportunity to deal with the baggage in their past and accelerate them to realize their full potential with good character, well developed self-leadership and a firm Christian foundation and an intimate relationship with the Lord.

Future Vision and expansion

- Multiple Target Life campuses nationally (Interdenominational)
- Own infra structure to host a International Target Life in South Africa (Locations Cape Town and Pretoria)
- Developing a low cost exportable Township model with a training the trainers facility
- To change a nation through equipping our youth

Funding needs for 2019

Bursaries for students (Sufficient student numbers provides for the course expenses and salaries)

- 40 Bursaries 2019
- 20 x R 54 000 / Student (Including commune without food) **R1.08 M**
- 20 x R 36 000 / Student (Excluding commune) **R0.72 M**
- Projects and New Leaders Training
- **R120 000** – Computers and Video equipment
- **R180 000** – Leadership training
- Total: **R 2.1 M**

2019

In 2019 there will be 2 Target Life Campuses in Pretoria at Lewende Woord Brummeria and Moreletapark Gemeente. Our NPC, Pro Dev Link NPC trades as Target Life en there is no financial benefit for the hosting Churches.

Please visit our website: www.targetlife.co.za

Video with testimonials and motivating funders to invest in Target Life:

<https://www.youtube.com/watch?v=ZEIAuXvbMzA&t=41s>